



**REGIONAL SPECIALISED METEOROLOGICAL CENTRE-TROPICAL CYCLONES, NEW DELHI  
TROPICAL WEATHER OUTLOOK**

**DEMS-RSMC TROPICAL CYCLONES NEW DELHI DATED 30.12.2024**

**TROPICAL WEATHER OUTLOOK FOR THE NORTH INDIAN OCEAN (THE BAY OF BENGAL AND THE ARABIAN SEA) VALID FOR THE NEXT 168 HOURS ISSUED AT 0600 UTC OF 30.12.2024 BASED ON 0300 UTC OF 30.12.2024.**

**BAY OF BENGAL:**

A fresh cyclonic circulation lay over central parts of south Bay of Bengal & adjoining Equatorial Indian Ocean extending upto 1.5 km above mean sea level at 0300 UTC of today, the 30<sup>th</sup> December, 2024.

Scattered low and medium clouds with embedded intense to very intense convection lay over south Bay of Bengal. Scattered low and medium clouds with embedded moderate to intense convection lay over central Bay of Bengal, Andaman Sea.

**\*PROBABILITY OF CYCLOGENESIS (FORMATION OF DEPRESSION) DURING NEXT 168 HRS:**

24 HOURS	24-48 HOURS	48-72 HOURS	72-96 HOURS	96-120 HOURS	120-144 HOURS	144-168 HOURS
NIL	NIL	NIL	NIL	NIL	NIL	NIL

**\*NOTE: EVERY 24HR FORECAST IS VALID UPTO 0300 UTC (0830 IST) OF NEXT DAY**

**ARABIAN SEA:**

Scattered low and medium clouds with embedded moderate to intense convection lay over eastcentral Arabian Sea, Maldives & Comorin area and weak to moderate convection lay over southeast Arabian sea, Lakshadweep islands area.

**\*PROBABILITY OF CYCLOGENESIS (FORMATION OF DEPRESSION) DURING NEXT 168 HRS:**

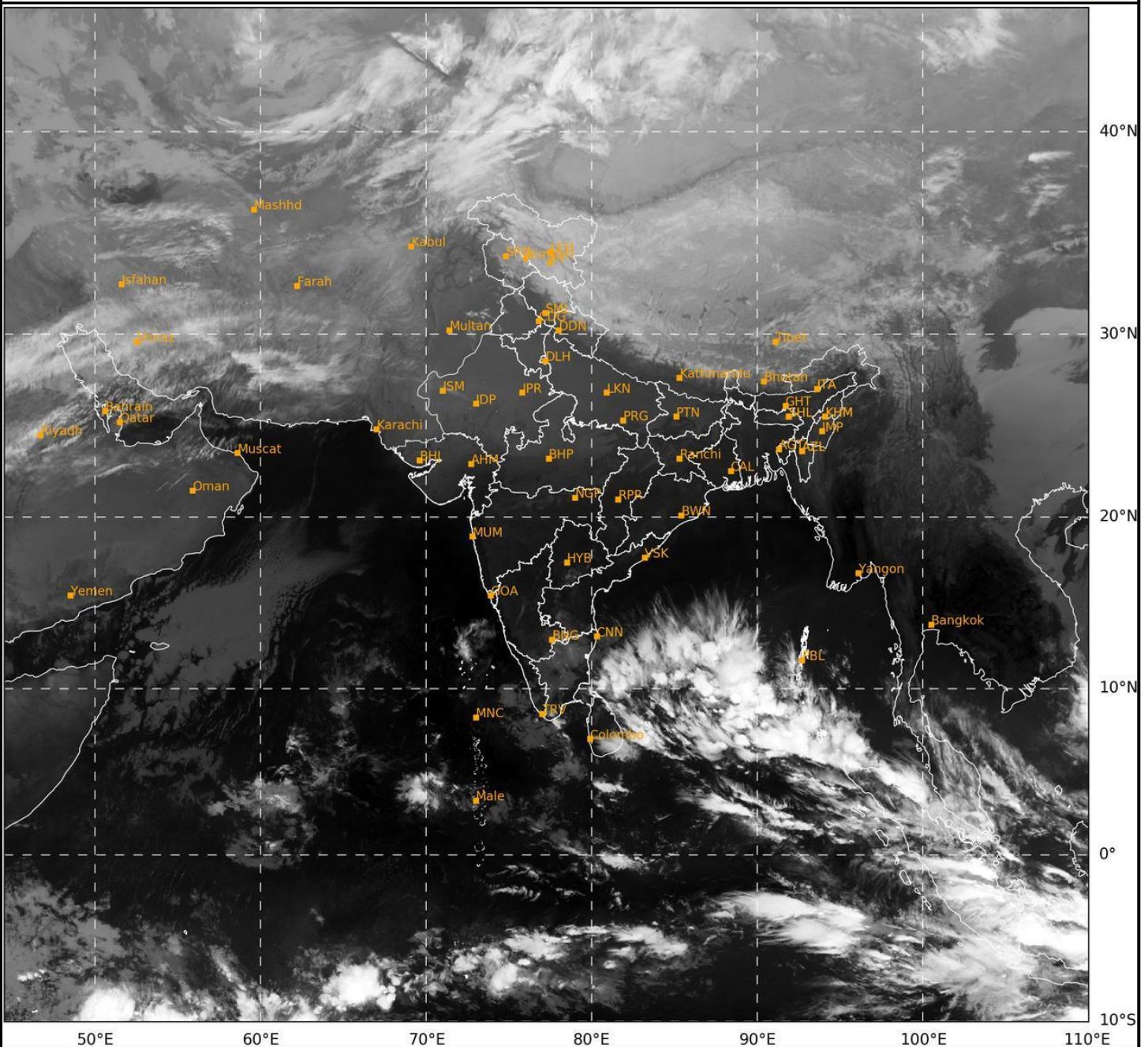
24 HOURS	24-48 HOURS	48-72 HOURS	72-96 HOURS	96-120 HOURS	120-144 HOURS	144-168 HOURS
NIL	NIL	NIL	NIL	NIL	NIL	NIL

**\*NOTE: EVERY 24HR FORECAST IS VALID UPTO 0300 UTC (0830 IST) OF NEXT DAY**

**REMARKS: NIL**

SAT : INSAT-3DR IMG  
IMG\_TIR1 10.8 um  
LIC Mercator

30-12-2024/(0245 to 0312) GMT  
30-12-2024/(0815 to 0842) IST



468

943

IMD, DELHI

Cloud distribution: (a) Isolated: <25%, Scattered:25-50%, Broken: 51-75%, Solid:>75%, Convection Intensity: (a) Weak: Cloud Top Temperature (CTT) >-25°C, (b) Moderate: CTT: - 25°C to -40°C, (c) Intense: CTT: - 41°C to -70°C and (d) Very Intense: : Less than -70°C  
PROBABILITY OF CYCLOGENESIS (FORMATION OF DEPRESSION):NIL: 0%, LOW: 1-33%, , MODERATE: 34-66% AND HIGH: 67-100%  
This is a guidance Bulletin for WMO/ESCAP Panel Member countries. Visit respective National websites for Country specific Bulletins